



Y6 Residential

Mon 21st March – Fri 25th March 2022

Kilvrough Manor



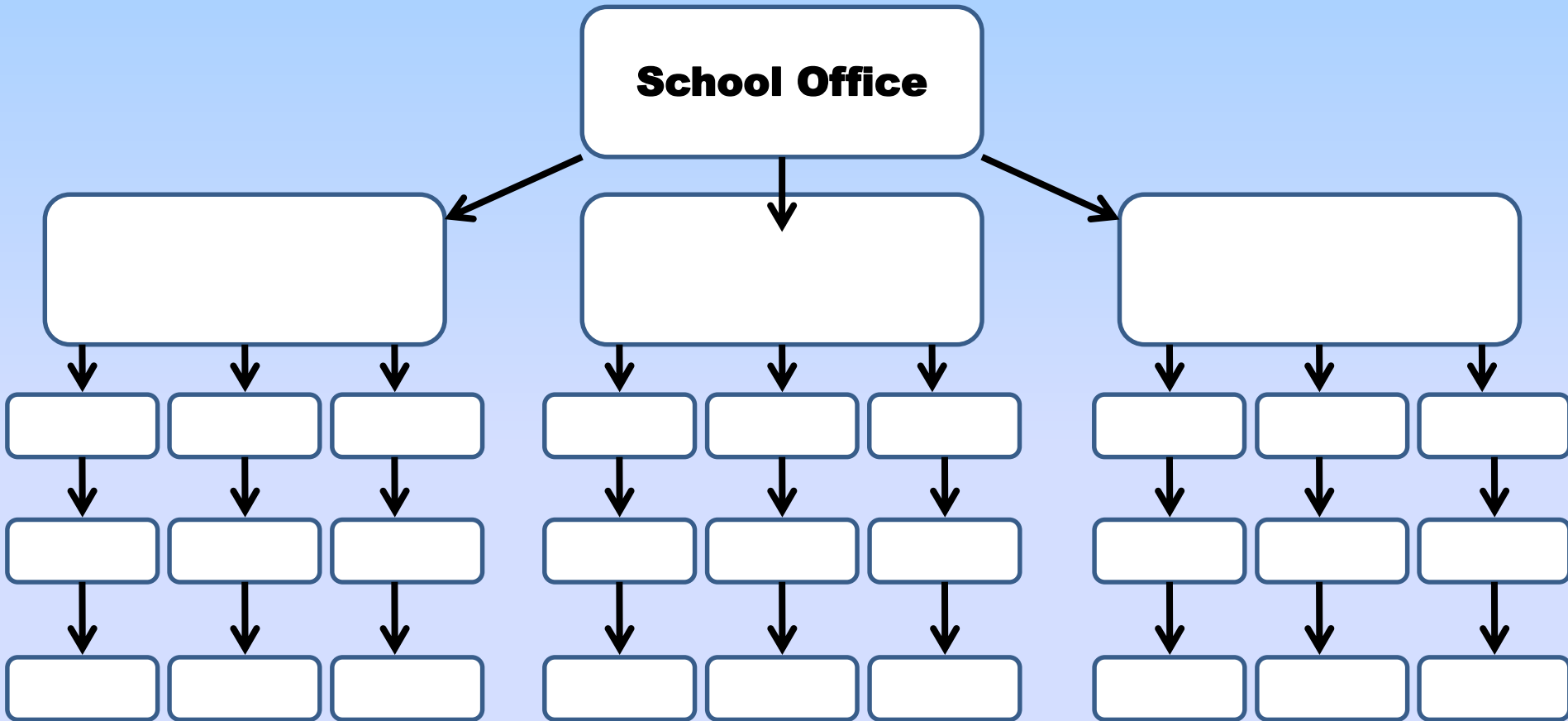
Kilvrough Manor

- We will be leaving school at approx 7:30am on 21st March.
- Children should arrive at school no earlier than 7:15am.
- Small snack for the journey and packed lunch to eat on arrival.
(Lunch will not be provided by the centre)
- We will arrive back at school at approx 7:40pm on Friday 25th March.

Telephone Tree

- We will contact the school office when we are approx. half an hour away from school.
- The school office will then contact the 3 parents at the top of the tree who will contact the next parents on the list and so on until all parents have been contacted with the arrival time.
- If you wish to volunteer to be at the top of the tree please sign up before you leave.

Telephone Tree



Please make sure that you can be contacted on the number supplied on Friday evening.

Kilvrough Manor

•Oxfordshire Outdoors has been providing high quality outdoor education for close to 50 years.

•Our Vision:

To be the preferred trusted provider of high quality outdoor learning opportunities for schools and communities across the South of England and Wales, enabling every child to experience the benefits of outdoor learning.

•Our Mission:

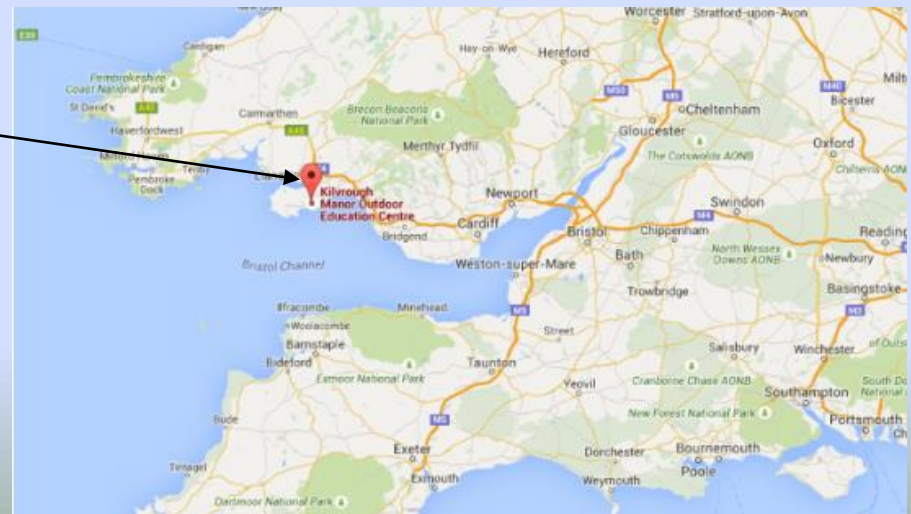
At Oxfordshire Outdoors our mission is to provide inspirational, challenging, high quality outdoor learning experiences for all.

•Our Values:

We have a number of universal values that thread through our One Service approach. These values are at the core of everything we do. Our values are:

- Co-operation
- Responsibility
- Honesty.
- Respect
- Happiness
- Humility
- Integrity
- Tolerance

Kilvrough
Manor



Kilvrough Manor

The centre

Kilvrough is a large converted Georgian Manor House with a grand history. Set in the idyllic Gower, we deliver a wide range of courses and high quality residential outdoor learning experiences for young people and adults.

On site facilities

A good drying room and cloakroom facility takes care of the outdoor clothing whilst indoors students can relax in a designated lounge area. The dining rooms and kitchens are located on the ground floor and we have on-site chefs preparing fresh meals daily. We also have a small shop offering souvenirs.

Accommodation

We can accommodate up to 60 students plus visiting staff. Bedrooms are located on single sex floors with rooms of varying sizes accommodating 4, 6 or 8 students with rooms and private bathrooms for visiting staff located nearby. The students have access to separate bathrooms with individual cubicle showers, and there are ample single toilet facilities.

<https://www.oxfordshireoutdoorlearningservice.co.uk/centres/kilvrough-manor/>

TEAMS

The children will be given the opportunity to experience working within different teams during the week.

- Dorms
- Activity Groups
- Duty Groups

(Before leaving on the residential the children will give 2 names of who they would prefer to be grouped with during the week, this information is then passed on to the staff at the lodge who group the children)

Activities

The activities have not yet been confirmed by Kilvrough.

But usually include:

- Ropes Adventure Course

An ideal way to start the week with the emphasis on personal challenge.

- Surfing

- Kayaking

- Rock climbing

- Coastal Walk / Beach Art / Rock pooling

- Additional evening activities organised by centre Tue – Thu

Kit List

Kit Lists (This has already been emailed out to parents)

Waterproofs, cagoules, over trousers, wellies, and rucksacks are provided at the centre.

- Please ensure the children pack their own bag!
- Bed sheets are now needed as the centre does not provide them.
Single fitted sheet, single duvet and duvet cover and pillow with pillowcase or pillow with pillowcase and sleeping bag
- Clothing should be clearly named.
- The children **MUST** have clean indoor shoes (boot room).
- The children will need a small snack packed lunch for arrival and labelled, 'sturdy' drinks bottle for the journey to the centre and to use throughout the week.

DO NOT PACK

Food or sweets (other than the snack).

MOBILE PHONES.

Electrical equipment, computer games, expensive toys.

Aerosols.

Cameras are brought at own risk – named, disposables are better.

Souvenirs Shop

All orders should have already been received. The children will receive what has been ordered whilst at the centre.

Sandwich Orders

Choice will be given to children and orders taken at school before visit. Please indicate on medical form any special dietary requirements.

Medical & Dietary Requirements

- **All medical forms must be received by Friday 4th March.**
- **All medicines should be clearly named and handed in to the office for the attention of Mrs Hiley no later than Friday 18th March.**
- **If medicines are in use they must be given directly to Mrs Kershaw or Mr Thompson on the morning of the residential. (They should not be given to the children)**

Code of Conduct

- **To ensure everyone enjoys a successful and safe visit to Kilvrough the children will agree to follow a code of conduct.**
- **A copy of the code of conduct will be sent home. Please discuss this with your child and sign and return the reply slip to confirm that you have received and read it.**
- **In the extreme event that your child does not adhere to the agreement you will be expected to collect your child from Kilvrough. The centre will make this decision so it is really important that the agreement is discussed at home.**

Contact

- **Please write a letter to your child.**

The letter must be delivered to school no later than Friday 18th March. The letters will be given to the children on the first night.

- **The children will be given 1 postcard and 1 stamp.**

If the children would like to send more letters or postcards please supply your child with the cards, envelopes and stamps needed.

- **The office will receive a daily update which will be displayed in the main entrance window or on the school website.**

Key Dates/Times

- We will be leaving school at **7:30am on 21st March.**
- We will arrive back at school at **7:40pm (approx) on Friday 25th March.**
- Gift Shop orders should have already been received.
- All medical forms must be received by **Friday 4th March.**
- All medicines should be clearly named and handed in to the office for the attention of Mrs Hiley no later than **Friday 18th March.**
- Please write a letter to your child.
The letter must be handed into school no later than **Friday 18th March.**
The letters will be given to the children on the first night.